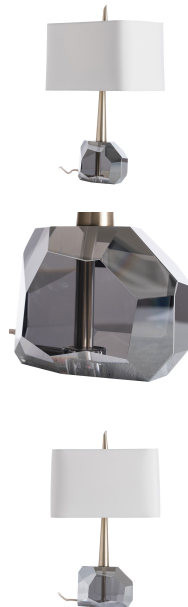


# GEMMA LAMP

## ARTERIORS



With its smoked crystal base and pale brass neck the Gemma Lamp beautifully toes the line between moody and glamorous. Beyond its contrast in materials the seemingly randomness of the crystal's diamond-like facets are a stark contrast to the neck's classically chic pale brass finish. Topped with a cloud gray microfiber shade and matching pale brass finial.

**DIMENSIONS** 342.9 W x 228.6 D x 584.2 H mm

**MATERIAL & FINISHES** Smoke Crystal/Pale Brass

[www.boydblue.com](http://www.boydblue.com)

BOYD  
*blue*

BOYD BLUE PTY LTD  
ABN 71 096 140 162

**Head Office & Warehouse:**

15 Blanck Street Ormeau QLD 4208

**Mail:** PO Box 647, Ormeau QLD 4208

**Operations/Accounts:** 07 5549 0722

**Warehouse:** 07 5549 0688

**PLEASE CONTACT YOUR LOCAL SHOWROOM:**

**QLD** (BNE) 07 3254 0899 [sales@boydblue.com](mailto:sales@boydblue.com)

(GC) 0877 07 5527 [salesGC@boydblue.com](mailto:salesGC@boydblue.com)

**NSW** 02 8338 8113 [salesNSW@boydblue.com](mailto:salesNSW@boydblue.com)

**VIC** 03 9509 3332 [salesVIC@boydblue.com](mailto:salesVIC@boydblue.com)